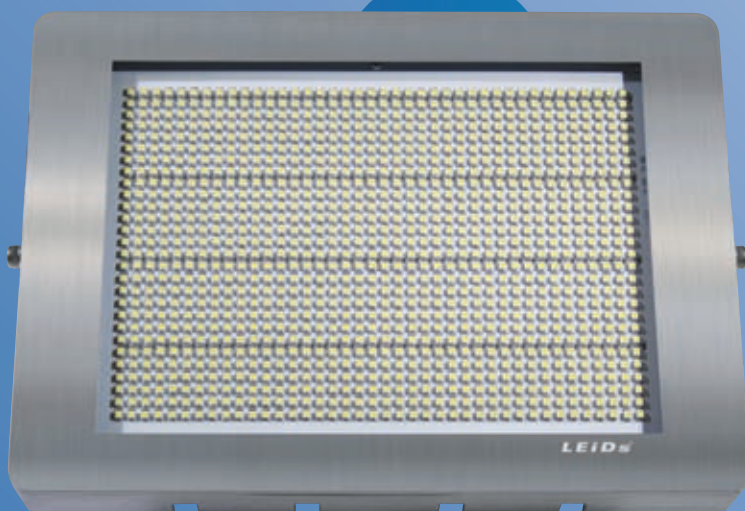
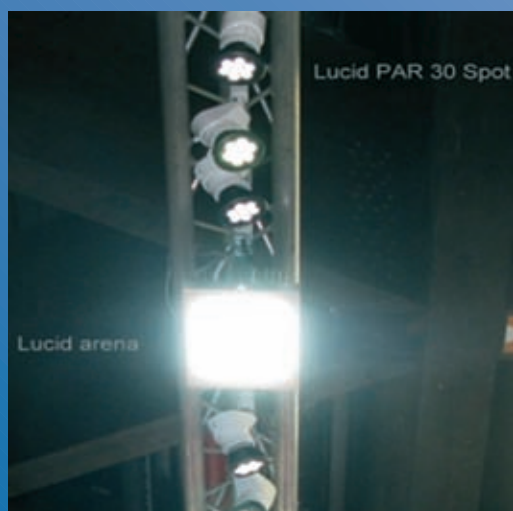




## Lucid object series

# Lucid arena – Hall-Lamp

- 320 x 217 x 135 mm
- Lightfield with 1,120 LEDs  
(LED contact spacing: 5.50 mm)
- available with angle of radiation 60°  
(for halls, warehouses with corridors,  
indoor sports halls) and 120° (for outdoor  
and large surface illumination)
- protection art IP 66
- ideal for hall/warehouse illumination
- light performance aprox. 500 Watt  
compared to a conventional light source,  
with total power consumption  
of only 100 Watt
- luminous flux: it depend on colour  
of light and angle of radiation,  
between 7,245 - 8,050 lm
- energy-savings up to 80 %
- life span over 60,000 h
- minimum heat development
- front panel made of shock  
and break proof polycarbonate
- solid aluminium heat sink
- with solid mounting bracket
- integrated 230 V transformer
- packed in individual box



### Optimization of the A/C

LEDs, compared to conventional light sources produces minimal heat. Therefore you are not only saving energy with the LEDs, but also reducing the energy consumed by the air-conditioning.



+49 611 97320-24 · [leids@msc-ge.com](mailto:leids@msc-ge.com)

Head office:  
MSC Vertriebs GmbH · Industriestr. 16 · D-76297 Stutensee

[www.msc-ge.com](http://www.msc-ge.com)

## Lucid arena – Hall-Lamp

LEiDs item-no.	Description	Bar-Code	€/gross pcs./pair/set
----------------	-------------	----------	-----------------------

### Lucid arena · angle of radiation 60° · protection art IP 66

18013	cold-white (6.500 K)	4050047180131	965,00
18023	daylight-white (5.000 K)	4050047180230	965,00
18033	normal-white (4.000 K)	4050047180339	965,00
18043	warm-white (3.000 K)	4050047180438	965,00

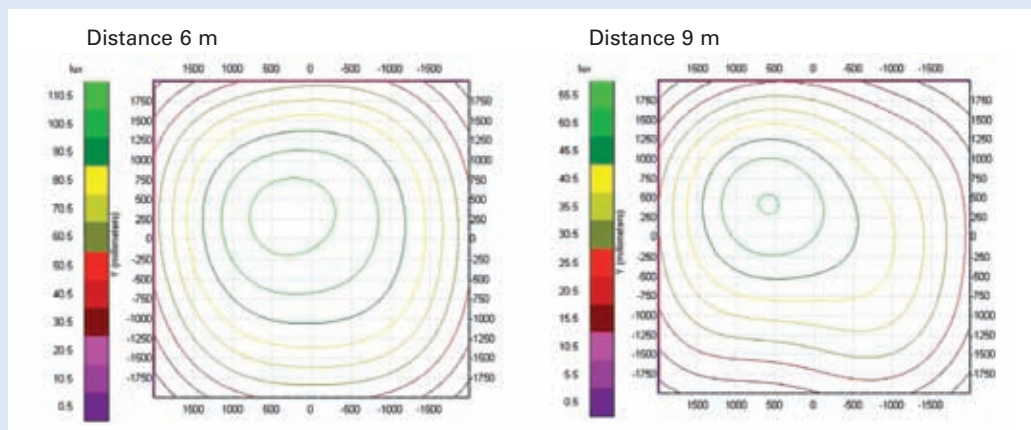
### Lucid arena · angle of radiation 120° · protection art IP 66

18010	cold-white (6.500 K)	4050047180100	840,00
18020	daylight-white (5.000 K)	4050047180209	840,00
18030	normal-white (4.000 K)	4050047180308	840,00
18040	warm-white (3.000 K)	4050047180407	840,00

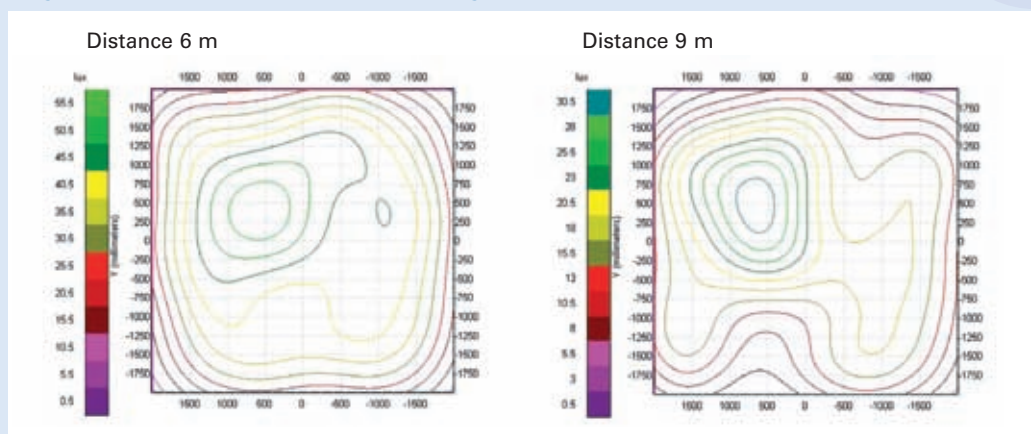
### Accessories

19780	3-phase-railsystem holder for Lucid arena	4050047197801	99,00
-------	---	---------------	-------

### Diagramm of illumination for Lucid arena (angle of radiation 60°)



### Diagramm of illumination for Lucid arena (angle of radiation 120°)



Similarly images, technical data are subject to change.